

The Web Pro Miami, Inc.  
2963 NW 99<sup>th</sup> Pl.  
Doral, FL 33172-1092

T: 786.273.7774  
info@thewebpro.com  
www.thewebpro.com



# Web Pro Manager: Installation Guide

v.1.0

**Web Pro Manager** is an open-source website management platform that is easy to use, intuitive, and highly customizable.

**Web Pro Manager** can be used to easily create and maintain complete Web sites.

## Table of Contents

---

1. [Introduction](#)
2. [Create a New Database](#)
3. [Install the Software](#)
4. [Installation Completed](#)
5. [Troubleshooting](#)

## Introduction

---

### Before You Get Started

To install Web Pro Manager, you need just 2 items before proceeding:

- A **website hosting account** with FTP access, PHP 4.0 or higher and GD Library 2.0 or higher,
- A **MySQL database (4.0 or higher)** on that hosting server,

## Create a New Database

---

### Setting Up a New MySQL Database for Your Website:

Follow the documentation or instructions provided by the hosting provider of your website to **create a new MySQL database**. This new database will hold the information for your new website. You will also need to **create a new user** for the database with full read/write access.

When you create your new database, be sure to note the following items which you'll need later:

- Your **database host**
- Your new **database name**
- Your **database username/password**



**Important: Your MySQL database must be version 4.0 or above to work with Web Pro Manager.**

## Install the Software

### Installing Web Pro Manager:

1. If you haven't already, **download** the latest copy of Web Pro Manager (available at [www.thewebpro.com](http://www.thewebpro.com))
2. Open up the ZIP folder you downloaded and **extract** the contents to a folder on your computer.
3. Connect to your web server via FTP and **upload** the entire extracted contents to the root directory of your website.
4. Open up a new browser window and type your website's address into the Address bar at the top of the browser window. You will be automatically shown the **Web Pro Manager Installer (Figure 1.1)**.

web pro manager

Congratulations, you're installing Web Pro Manager! It'll be quick... just fill in the info below.

[Need a little help?](#)

### 1 Setup your website

Website name:   
(e.g. My Web Site)

Website path:   
(e.g. http://www.website.com/)

Your email address:

Default language:

### 2 Setup your database

[Confused yet?](#)

Host name:   
(e.g. localhost)

Database name:

Figure 1.1 The Web Pro Manager installation page.

5. Fill out all fields in the Installation form. The fields are fairly self-explanatory, but if you need more info on what each field is, here you go:

**Website name** - This is the name of your website. If your website is about a specific company, issue or topic, use that name here.

**Website path** - This is the direct address (URL) for your website. It should contain "http://" at the beginning and a trailing "/" at the end. It can be a subdomain and/or contain subfolders (e.g. "http://blog.mysite.com/", "http://mysite.com/blog/").

**Email address** - We need this so that you can recover your password if you ever lose it. You'll also receive an email after install with your initial login information.

**Default language** - This is language you want seen when a new visitor arrives at your site. You have the option of adding more languages once Web Pro Manager is installed, under 'Site Settings'.

**Host name** - This is the hostname of your MySQL database server.

**Database name** - This is the name of the MySQL database you created for your Web Pro Manager installation. It should contain any prefixes used by your server (e.g. "myweb\_webprodb") if needed.

**Username/password** - This is the username/password to connect to the MySQL database you setup for your Web Pro Manager installation. This username **MUST** have full read/write credentials to the database.

6. Once all fields are filled in, click "Install This" button at the bottom.

## Installation Completed

If there are no errors in the information you provided to the installer, Web Pro Manager will install all necessary files, database information and take care of all initial configuration automatically.

You will be redirected to a “Success” page (**Figure 1.2**).

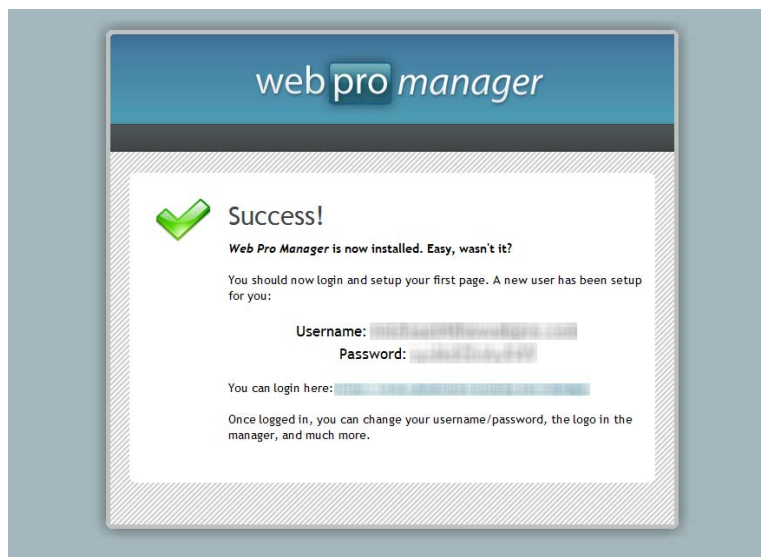


Figure 1.2 The Web Pro Manager installation “Success” page.

## Your New Login Information

After a successful installation, a new user is created for you with an auto-generated password. You will use this username and password to login to Web Pro Manager for the first time.

**This new user information has been emailed to you during installation. Be sure to keep your password stored safely.**

To login, simply click the link on the “Success” page or in the email that was sent to you.

**You’re all set! Web Pro Manager is now fully installed and ready for use.** For more information on how to use Web Pro Manager, please review our User Guide available at [www.thewebpro.com](http://www.thewebpro.com).

## Troubleshooting

The Web Pro Manager installer is intelligent enough to correct many errors on its own and not bug you with trivial issues that don't affect the system after installation, but in certain cases you might run into a problem that you need more help on.

Following is a list of almost all possible errors you could run into during the install process:

Error	Resolution
A connection to the database [database name] could not be made through [database host]. Please check your database settings.	<p>The installer could not connect to your MySQL database with the information you provided. Re-check your settings in the "Host name" and "Database name" field to ensure they are correct. Ensure that the Username and Password are correct and that the user has read access to the database you set.</p> <p>NOTE: A setting of "localhost" for your database host will NOT work if your MySQL database is not on the same server as your hosting account. If this is the case, you will need to check with your hosting provider for the correct host name for your database.</p>
Your email address is not in a valid format. Please fix it before proceeding.	<p>Your email address must be in a standard format to be used in the system: [text]@[text].[tld] ...or... [text]@[text].[tld].[tld]. If you have confirmed that your email address is correct and you still receive this error, please use a different email address for installation.</p>
There was an error writing to the database. Please check your SQL syntax at [file name].	<p>There is an error in the SQL dump file. Unless you understand SQL statements, you should not try to fix the error in the file yourself. Instead, download the latest version of Web Pro Manager and try to install again.</p>

**There was an error writing to the database. The SQL dump file [file name] does not exist.**

The SQL dump file could not be found, which means that the files that make up your installation are incomplete. Make sure you have uploaded the ENTIRE contents of the extracted Web Pro Manager ZIP file. If you are sure you have uploaded everything, your installation is corrupt and you should download the latest version of Web Pro Manager and try to install again.

**The database [database name] was connected to, but cannot be read from. Please ensure the username you entered can write to the database.**

Your MySQL database settings are correct, but the username you entered doesn't have the privileges to read from the database. Try updating the privileges for the database user to full read/write, or create a new user and add full privileges for your database, update your settings and try again.

**Error writing to database. Data for field [database field] was NOT saved.**

If this error appears only once, this is most likely a non-critical issue and you can finish the installation without worrying about the problem. If you see more than one of this error type, your database might not be able to update with the connection information you supplied. Make sure your MySQL user has full write capabilities to your database.

**Unable to copy file/folder [file name] to [file name]. Please make sure your installation includes this file/folder.**

The installer had problems copying files inside of your hosting account. This could mean that the files that make up your installation are incomplete, in which case you should make sure you have uploaded the ENTIRE contents of the extracted Web Pro Manager ZIP file. If you are sure you have uploaded everything, If you are sure you have uploaded everything, your installation is corrupt and you should download the latest version of Web Pro Manager and try to install again.

**Unable to save database connection file [file name]. Please re-run installer.**

The installer was unable to edit and copy the main database connection file for your new website. Using FTP or the command line, temporarily CHMOD the folder 'inc' in your root Web Pro Manager installation to 777, then try again. If this solves the problem, make sure to CHMOD the folder to 644 or back to what it was prior to your change.



**GD LIBRARY MISSING:** We searched your server for GD Library and couldn't find it. If it's missing, automatic resizing of images won't work and you won't have cool little icons. Sorry!

Your server does not have GD Library installed. This is important for making full use out of Web Pro Manager and you should try hard to convince your webhost to install this package on your server. Tell them that If they don't , you're going to host your website with a REAL webhost like The Web Pro. Then, contact us and will set you up with a full-featured server for your new website.

**UNABLE TO DELETE:** We are unable to delete the [file name] directory/file. Please remove this directory on your own for security purposes ASAP.

This is a non-critical error. To resolve it, simply delete the file that the error points you to.

**UNABLE TO EMAIL:** There was a problem e-mailing your login information shown here. Please print this page instead.

The installer for Web Pro Manager uses the native mail() function of PHP to send it's email communications. This error simply let's you know that the email didn't go through and your webhost may need more credentials to send out email. This is a non-critical error and to resolve it, just write down your username and password and store it somewhere safe.

**Installer unable to copy .htaccess.** Please manually upload the file '.htaccess' to your main installation directory on your server.

For some reason, the installer was unable to copy your new website's .htaccess file to the root of your installation directory. This may be because one already exists with different write permissions. In any case, you will need to manually upload the .htaccess file from your local installer directory by FTP to the root directory of your WPM installation.

## Need more help?

Visit us online at [www.thewebpro.com](http://www.thewebpro.com) to search through our Web Pro Manager guides and documentation.